

2012 NOMCOM FINAL REPORT

TRANSPARENCY & ACCOUNTABILITY

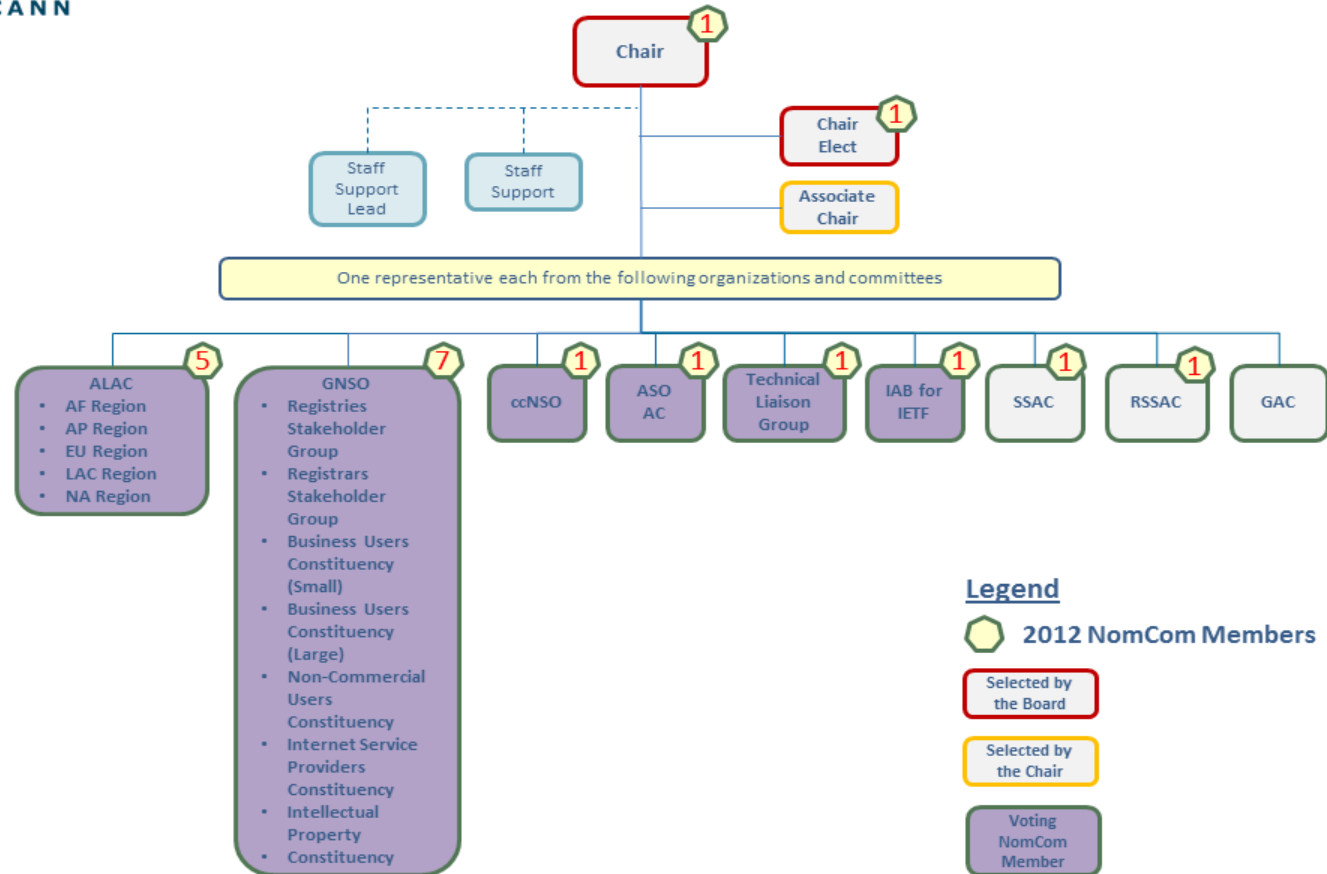
Vanda Scartezini
2012 Chair



2012 NomCom Committee



Nominating Committee Organizational Chart



Nom Comm 2012



Jacqueline Morris
ALAC - LAC

Maria Farrell
NCUC

Rob Hall
2012 Chair Elect

Krista Papac
Registrar's SG

Anthony Harris
ISPCP

Wau
CBU

Al McGrady
IPC

Olof
Nordlling

Glenn McKnight
ALAC - NA

Joette
Youkhanna

Jian Zhang
ccNSO

Vanda Scartezini
2012 Chair

Siranush Vardanyan
ALAC - AP

Yrjo Lansipuro
ALAC - EU

Sarah Deutsch
CBUC - Large

2012 NomCom Committee

2012 Nominating Committee Members			
Group Represented	Name	Country	Special facts
2012 Chair	Vanda Scartezini	Brazil	Non-voting
2012 Chair Elect	Rob Hall	Canada	Non-voting
RSSAC	Joao Damas	Portugal	Non-voting
SSAC	Lyman Chapin	USA	Non-voting - Resign
ALAC - NA	Glenn McKnight	Canada	Voting
ALAC - EU	Yrjö Länsipuro	Finland	Voting
ALAC - AF	Mohamed El Bashir	Sudan	Voting
ALAC - AP	Siranush Vardanyan	Armenia	Voting
ALAC - LAC	Jacqueline Morris	Trinidad & Tobago	Voting
CBUC - Small	Waudu Siganga	Kenya	Voting
CBUC - Large	Sarah B. Deutsch	USA	Voting
gTLD Registry	Ken Stubbs	USA	Voting
Registrars	Krista Papac	USA	Voting
ccNSO	Jian Zhang	China	Voting
ISPCP	Anthony Harris	Argentina	Voting
IPC	J Scott Evans	USA	Voting
ASO	Hartmut Glaser	Brazil	Voting
NCUC	Maria Farrell	Scotland	Voting – Resign
IAB for IETF	Ole Jacobsen	USA	Voting
TLG – W3C	Jose M. Alonso	Spain	Voting



Members Regions & Gender



Members By region		
Africa	2 members	10%
Asia	2 members	10%
Europe	4 members	20%
Latin America & Caribbean	4 members	20%
North America	8 members	40%

Members By Gender		
Females	7 members	35%
Males	13 members	65%

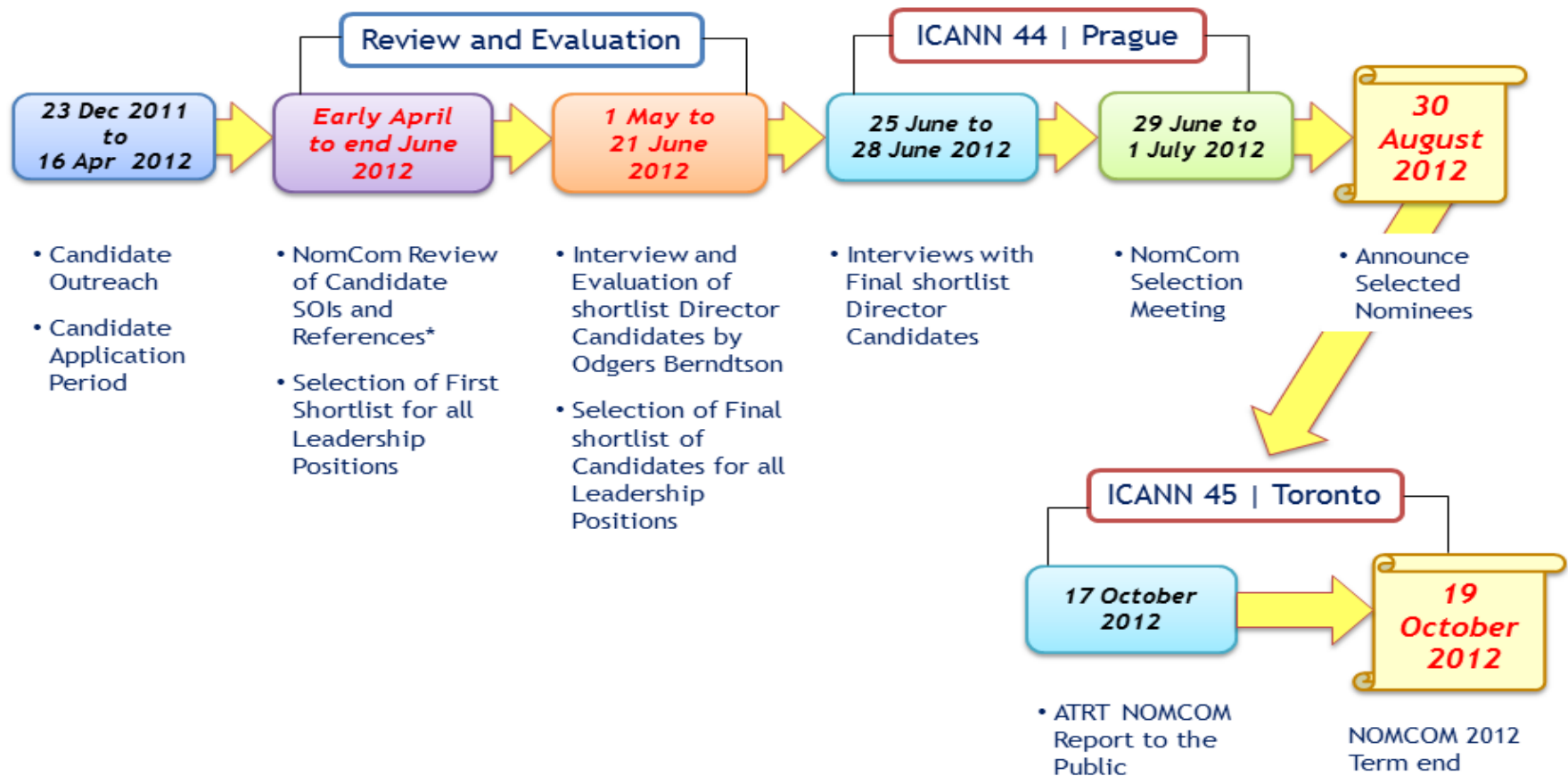
Transparency & Accountability



- **New flyers, Information to Candidates and new Sol was designed**
- **Skill set requirements from ACs+ SOs**
- **Board advice on skill set**
- **Transparency guidelines approved - June**
- **NomCom established new internal procedures, guidelines + code of conduct**



2012 NomCom Posted Timeline



Transparency & Accountability

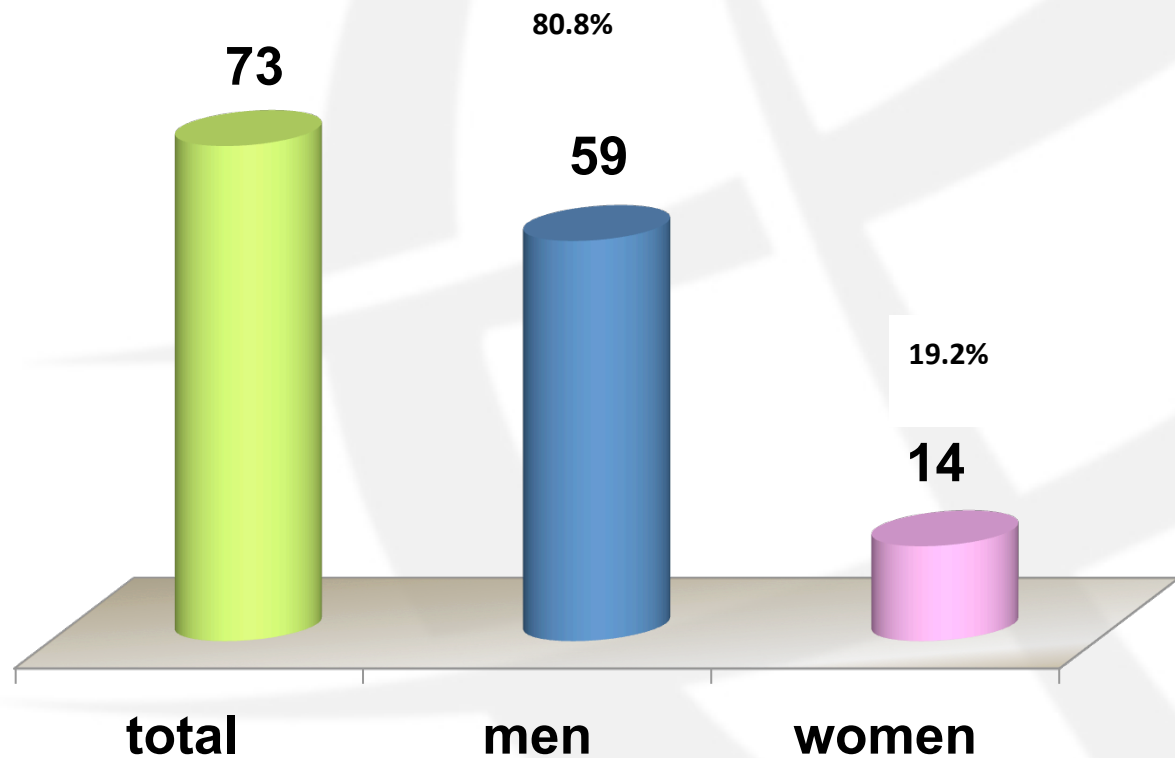


- News informed to candidates
 - Directors' compensation;
 - New Conflict of Interest ;
- New Recommendations on Procedures
- The Final Report with Matching Matrix.
- Personal email from the chair to all selected and not selected candidates



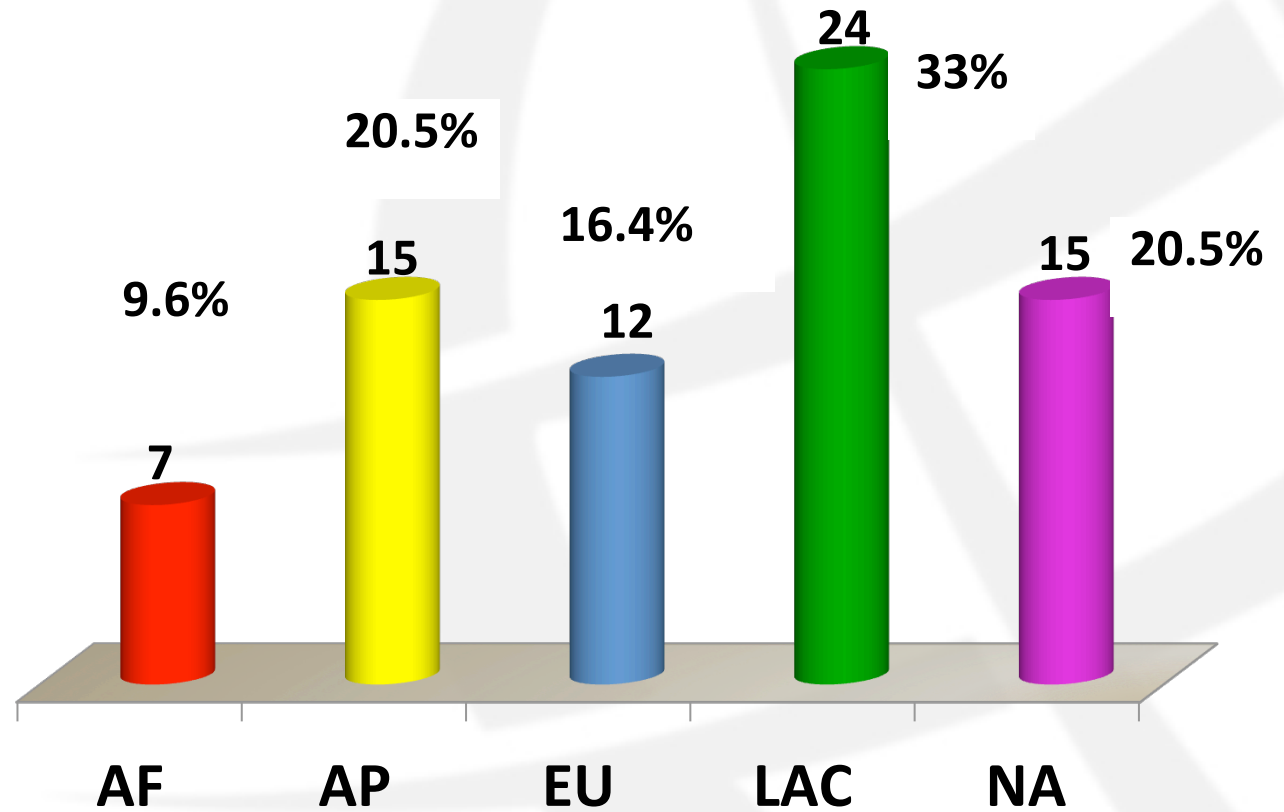
2012 NomCom Candidates Statistics

2012 Candidates X Gender



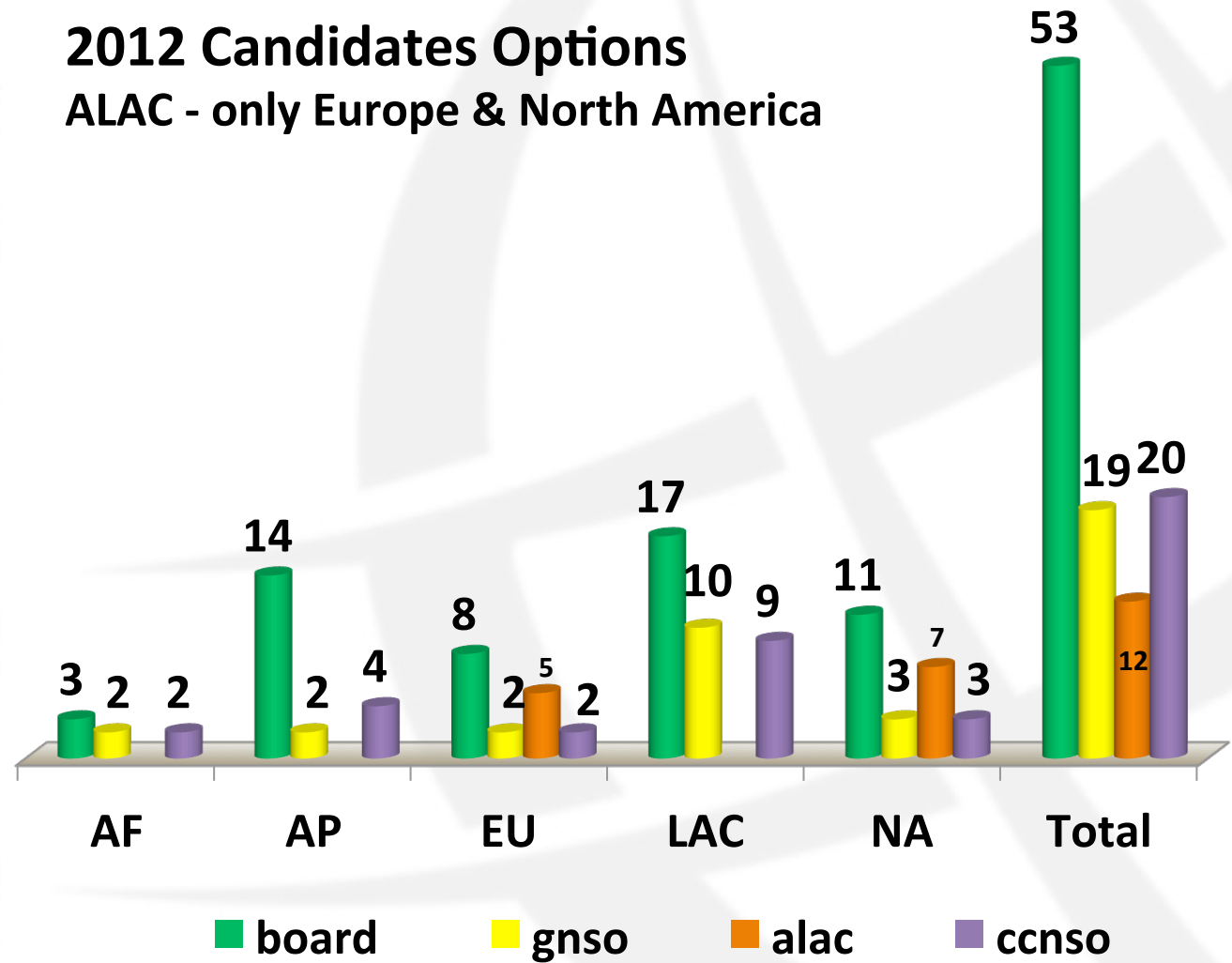
2012 NomCom Candidates Statistics

2012 Candidates X Regions



2012 NomCom Candidates Statistics

2012 Candidates Options ALAC - only Europe & North America



2012 NomCom Candidates Statistics

**Comparing
2011 X 2012
Candidates**

Vacancy	2011	2012
ALAC	(3) 42%	(2) 16,4%
BOARD	(2) 65%	(3) 72,6%
ccNSO	31%	27,4%
GNSO	(2) 36%	(1) 26%
TOTAL	8 positions	7 positions



Selected Candidates



ICANN Board of Directors

- [George Sadowsky](#), North America
- [Gonzalo Navarro](#), Latin America/Caribbean
- [Olga Madruga-Forti](#), Latin America/Caribbean



Selected Candidates



ALAC

- [Alan Greenberg](#), NA
- [Jean-Jacques Subrenat](#), EU

GNSO Council

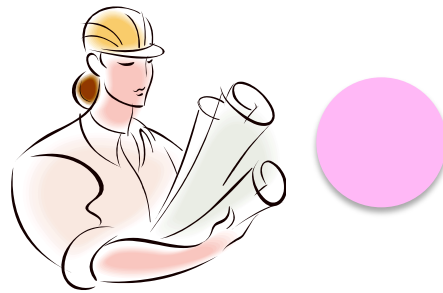
- [Jennifer Wolfe](#), NA

ccNSO Council

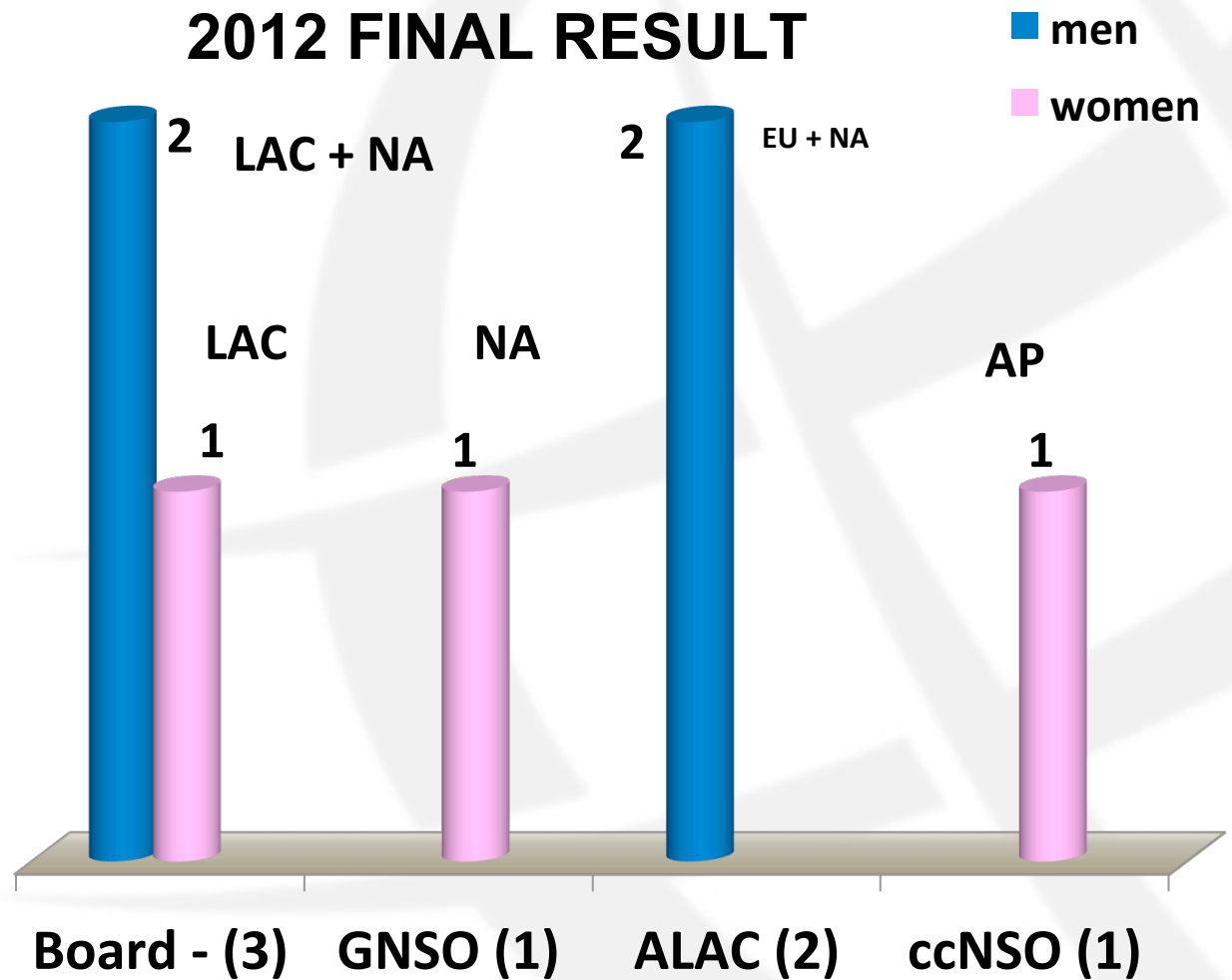
- [Mary Wong](#), AP



2012 NomCom Candidates Statistics



2012 FINAL RESULT



Recommendations from Ry, Rr, BC, NCUC

**FOR
ALL
POSITIONS**

- Integrity & Honesty
- Listening capacity
- Build relationships
- Diplomatic behavior
- Team person
- Quick learning person
- Executive mind – decision maker
- Assimilate different information to make decision



Recommendations from Ry,Rr,BC,NCUC

FOR THE BOARD

Technical (need to have at least general idea about the issues)

Policy – must be good in this issue.

Governance (not management skills only – board experience is relevant)

Communicate in English (other languages are relevant)

Capacity to delegate

Strong understanding and belief in Multi-Stakeholder model

Time availability & Independence



Recommendations from Ry, Rr, BC, NCUC

FOR

GNSO

- Knowledge of the Organization and the Market.
- Understanding of the policy making process.
- Feels what is the need while there – capacity of embedded yourself on the group.
- Team person - personality that performs well inside a group.
- Time to work really.
- Flexibility.
- Consensus process – understanding and flexibility to build a consensus.
- Focus on results (Too much process is not convenient)



**M
A
T
C
H
I
N
G

M
A
T
R
I
X**

Board requisites	Matching
Integrity & Honesty & Intelligence	Excellent
Board experience -similar sizes	Well Qualified
Listening capacity	Excellent
Build relationships	Excellent
Diplomatic behavior	Excellent
Team person	Excellent
Quick learning person	Excellent
Executive mind – decision maker	Qualified
Assimilate different information to make decision	Excellent
Confident but not arrogant	Excellent
Accept public criticism with elegance	Excellent
Independence	Excellent
Understanding of ICANN's mission	Well Qualified
at least general idea of technical issues	Excellent
Policy – must be good in this issue.	Excellent



BOARD....

MATCHING MATRIX

Capacity to easy communicate in English	Well Qualified
Governance (not management skills only – board experience is relevant)	Well Qualified
Capacity to delegate	Excellent
Strong understanding and belief in Multi-Stakeholder model	Excellent
Understand that communication with community is not only easy communication, but is about how to work consensus with the community.	Excellent
Time availability is relevant.	Qualified
Multilingual person is relevant	Well Qualified
Board experience with Non Profit Organizations	Well Qualified
Handled with Board members distributed in locations and time-zones around the world	Excellent



MATCHING MATRIX

GNSO requisites	Matching
Integrity & Honesty & Intelligence	Excellent
Board experience -similar sizes	Excellent
Listening capacity	Well Qualified
Build relationships	Excellent
Diplomatic behavior	Excellent
Team person –performs well in a group.	Excellent
Quick learning person	Excellent
Executive mind – decision maker	Excellent
Assimilate different information to make decision	Excellent
Confident but not arrogant	Excellent
Accept public criticism with elegance	Excellent
Knowledge of the Organization / and the Market.	WQ/ Excellent
Understanding of the policy making process.	Excellent
Capacity of embedded yourself on the group.	Excellent
Time to work really.	Well Qualified
Flexibility.	Well Qualified
understanding and flexibility to build a consensus.	Excellent
Focus on results	Excellent



Recommendations



- **General Rules of Participation**
- **Ethics**
- **NomCom work and its Selection Process**
- **Logistics**



WELCOME!!

NOMCOM 2013



Chair – Yrjö Länsipuro

Chair Elect – Cheryl Langdon- Orr

Associate Chair – Adam Peake



2013 New Open Positions



APPLY !!



- **3 Board Members**
- **2 GNSO voting positions**
- **3 ALAC positions:**
 - **Africa**
 - **Asia Pacific**
 - **Latin America & Caribbean**
- **1 ccNSO position**

How to Proceed

- ✚ **APPLY** on line at:
<http://nomcom.icann.org>
- ✚ Essential information about the open positions is available at:
<http://nomcom.icann.org>
- ✚ Send questions or recommendations in an email to the NomCom:
nomcom2013@icann.org



Questions?

One World

One Internet



Thank You!
<http://nomcom.icann.org>

vanda@uol.com.br

